

BYGONE TIMES

Newsletter of the TROUTDALE HISTORICAL SOCIETY

November 2002

Coming Up

Granny's Attic

Last Month
at Harlow House

Granny's Odds-n-Ends
and census records
from the Troutdale area

The Historic Highway

Nov 17, 2pm

A slide show presented
by Clarence Mershon
featuring his book and
research on the historic
highway. Limited prints,
book signing, and re-
freshments. Friends of
Vista House presents in-
formation on the restora-
tion at Crown Point.

Held at the Troutdale
City Hall.

FREE!

Christmas at the Harlow House

Dec 7, 12 to 4pm

Harlow House wel-
comes everyone for the
Teddy Bear Holidays!
Seasonal decorations,
cookies, wassail and
good cheer!

FREE!

Columbia River Highway Subject of Nov Mtg

By Marie Miller

The Historic Columbia River Highway
and Vista House at Crown Point will be
topics presented at the next THS program,
to be held Sunday, November 17th. The
program begins at 2pm in the Troutdale
City Hall Council Chambers.

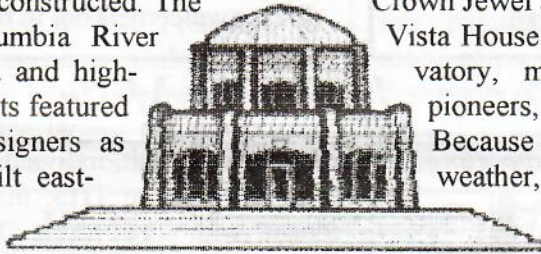
Clarence Mershon, local author and his-
tory buff, will present a slide show of his
research on the Historic Columbia River
Highway, which was an engineering mar-
vel of the time when constructed. The
scenery of the Columbia River
Gorge was preserved and high-
lighted with viewpoints featured
by talented road designers as
the highway was built east-
ward from Portland.

Clarence's books

are favorites of many of our members, and
we are pleased he will be available to sign
copies at the program. He will also present
limited prints of the C.W. Post drawings of
Crown Point, which were done prior to the
construction of the Vista House.

Executive Director of the Friends of
Vista House, Dennis McLearn, will present
slides on the restoration of Vista House and
provide information on the progress made
to date on the campaign to fully restore the
"Crown Jewel at Crown Point".

Vista House was built as an obser-
vatory, memorial to Oregon's
pioneers, and comfort station.
Because of years of harsh
weather, mistaken repair sys-
tems, and visitor de-



(Continued on page 2)

Christmas Brings Teddy Bears to Harlow House

By Doneva Shepard

Commemorating the 100th birthday of
the stuffed animal that has taken up resi-
dence in the hearts of children of all ages,
Harlow House has gone "totally Bear!"

George Klinger, Troutdale's Teddy Col-
lector will be exhibiting his entire collec-
tion throughout the Christmas season.
George is a long-time collector with an
extensive collection of fine bears.

The annual Christmas Open House (12
to 4pm, Dec 7th), will find this year's tree
loaded with Teddy Bear decorations, each
one unique and hand-made by a Troutdale
Historical Society member. Some of the
bears will be stitched from fabric, others
will be decorated and painted. These do-
nated ornaments will be available for sale
during the Christmas season.

Many countries claim to be the birth-
place of the Teddy Bear. The British be-

lieve the cuddly creature originated within
their shores and is named for King Edward
VII, who was nicknamed "Teddy."

In Germany, they claim Teddy was
birthed when toy manufacturer Margaret
Steiff made toy bears from sketches drawn
by her nephew on his trips to the Stuttgart
Zoo. In 1903 these bears were displayed at
the Leipzig Trade Fair where an American
toy buyer placed an order for 3000, fol-
lowed by subsequent orders for 10,000
more bears by the end of the year.

Here in America, President Theodore
"Teddy" Roosevelt spared the life of a bear
cub which had been orphaned during a
hunt. This incident, which occurred in Mis-
sissippi in 1902, was the subject of a car-
toon by Clifford Berryman of the Washing-
ton Post, captioned "Drawing the line in
Mississippi."

(Continued on page 3)

C
of
W
E

Historic Highway

(Continued from page 1)

mands, the Vista House closed a year ago to begin a full restoration on its exterior and interior designs. Phase I, the exterior work, has been completed. Now begins Phase II, the \$2 million interior work, with a projected rededication date in the spring of 2004.

Please plan to attend this exciting program on November 17th! There is no charge for admission, but donations are welcome. Refreshments will be served as well. We look forward to seeing everyone there! ❖

Clarence Mershon's books are also available for purchase at the THS Office, in the Depot...

THS Members Elect New Treasurer

By Marie Miller

One of the items for the meeting at the October 19th School Program was an election of a new Treasurer for the THS Board of Directors.

Placed in nomination and voted into office was Thomas A. Graves. Tom is a CPA and owner of Doty & Graves, PC, in downtown Gresham. He has been with the company for 9 years, where his work entails client consultation with financial statements, tax returns, accounting, and estate issues.

Tom, his wife Cheryl, six children, and various cats & dogs, live in Gresham. Besides his work as a CPA, Tom enjoys snow skiing and water skiing, discovering the history of the Troutdale area and time with his family.

Tom has had experience with nonprofit financial matters, having served as Treasurer of the Gresham Rotary and Legacy Mount Hood Medical Center Foundation.

The Board of THS is pleased with the addition of Tom Graves as Treasurer, and thanks him for "jumping on board" in this position. Tom will assume the duties as Treasurer immediately and will be in attendance at the November board meeting.

Please welcome Tom to the THS Board! ❖

Director's Corner, by Marie Miller: Tax Credit Opportunity

Saving Money and Supporting THS is as Easy as...

As I search for funding opportunities and resources of revenue that will allow the Society to carry out our mission, provide our community with programs, exhibits, materials, displays, events and media that share our history with generations to come, I would like to share some information about Oregon's Cultural Trust. It's a unique program that assists organizations such as THS with funding opportunities not always easily available.

Because THS is a 501(c)(3) organization (a federally registered nonprofit), gifts to THS are tax deductible. We are a qualified partner in the Oregon Cultural Trust because of our nonprofit

status. As a result, individual and corporate gifts to THS, made in concert with a gift to the Oregon Cultural Trust, qualify you for a tax credit, in addition to the charitable deductions you can take for both gifts.

Here's how it works...

1. The first step is to make a contribution today to THS.

2. The second step, which you take in December, is to contribute any amount to the Oregon Cultural Trust.

3. The third step, when you prepare your taxes in 2003, is to take your allowable charitable deductions AND an Oregon income tax credit of up to \$500 (for individuals) or \$2,500 (for corporations) for the lesser of the two contributions.

In return you receive...

1. A tax deduction for both gifts (a reduction in taxable income).

2. The Oregon tax credit (a direct reduction to your Oregon taxes).

3. The personal satisfaction of directing your gifts specifically toward strengthening and preserving Oregon's culture, arts and heritage.

As you consider your charitable giving plans, keep this innovative partnership in mind. The Oregon Cultural Trust opens doors to long-term, self-funded financial stability for Oregon's cultural organizations such as the Troutdale Historical Society. Give me a call if you have questions. You can reach me at the THS Office, 503-661-2164. ❖

Albertsons & THS

Inside your newsletter you will find an Albertsons Grocery card that can really help THS!

Simply present this card with the special THS barcode at checkout when shopping at Albertsons, and they will add to their community partnership funds a percent of your total.

Periodically, THS receives a check from Albertsons because of *your* help in shopping at Albertsons! It's an easy thing to do, and their contribution through the community partnership means a great deal for our THS funding resources.

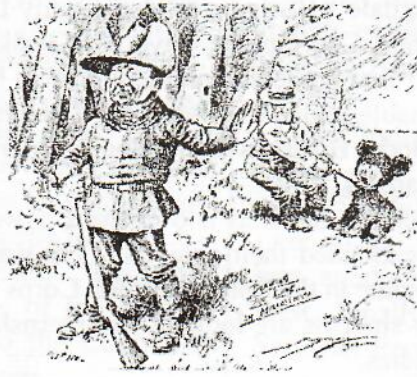
So please put your Albertsons card in your wallet, and remember to present this at checkout time.

We thank our friends at Albertsons for their help and generous contributions! ❖

A Very Teddy Christmas To You...

(Continued from page 1)

A copy of this cartoon was seen by Brooklyn toy shop owners, Morris and Rose Michtom. Inspired by the cartoon, Mrs. Michtom made a toy bear and displayed it in the shop window. The cute bear proved to be an enormous attraction.



Mr. Michtom wrote to President Roosevelt requesting permission to name the bear "Teddy" in his honor. With the agreement of the President to share his name with a stuffed bear, the foundation was laid for one of the largest toy companies in the United States, the Ideal

Toy Company.

Wherever the Teddy Bear was born, we can safely determine it is time for a 100th birthday party for this ever popular creature.

If you would like to donate a hand crafted Teddy Bear ornament for our ornament sale, please deliver your Teddy Bears to the THS office

by the first week in December. Make any sort of Teddy Bear ornament you would like...sewn, tole painted, crocheted, baked, made of paper...we welcome all donations. Think creatively and have fun designing your teddy bears. Thank you! ❖

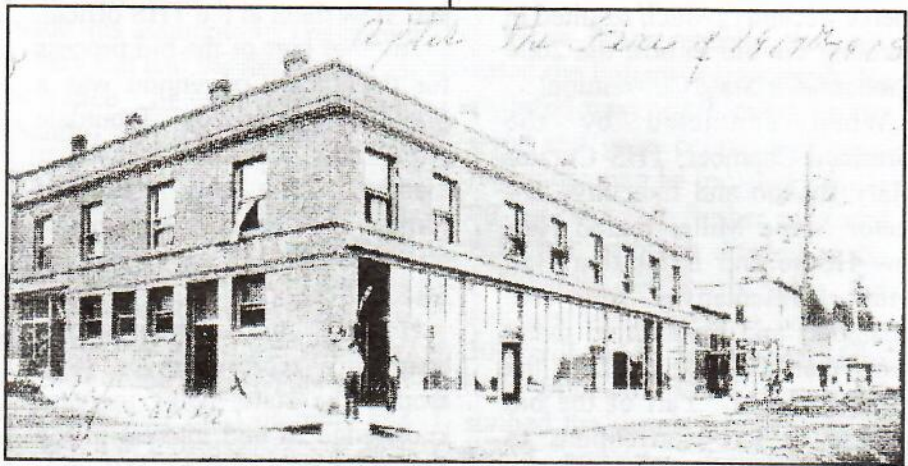
2002 Fire Not the First to Engulf Downtown Building

By Sharon Nesbit of The Gresham Outlook

Fire is no stranger to the downtown building that burned Saturday, September 14, 2002. Once called the Hotel Troutdale, it was the city's first brick building and rose at the corner of Columbia and Harlow streets on the ashes of a 1907 blaze that incinerated almost every business on Troutdale's main street. The saloons and general stores re-opened the next day under canvas.

The brick building took longer to finish and was built, apparently as an investment, by the Weinhard (partner of Blitz-Weinhard brewery) estate, according to Troutdale Historical Society records.

Constructed with touches then found only in downtown Port-



The first brick building in Troutdale... "After the Fire of 1907"

land, it had freight delivery access from the street to the all-brick basement, glass skylights that shed light into the basement and new sidewalks with the names of the street level businesses imprinted in the concrete. The upper floor was the hotel,

catering to business travelers.

Brick would not burn, bragged Troutdale's businessmen who were weary of losing their commercial district to flames. The new building housed a barber, a bank, a saloon and the Harlow,

(Continued on page 6)

Springdale Job Corps Tour

By Marie Miller

In October, Mary Bryson and Marie Miller toured the Job Corps Center at Springdale. Who would have known there were so many facilities and even a learning center tucked behind that wonderfully carved dragon on the Historic Highway?

Carlyn Mitas, Springdale's Business & Community Liason, and Stefanie Siebold, Transition Coordinator, gave us a walking tour of the buildings. We learned that students completing their high school degrees there learn valuable skills transferable to Health Occupations, Culinary Arts, Auto Body, Business Technologies, Marketing & Retail Sales, and Electrical careers.

Beside Carlyn & Stefanie, students and instructors welcomed us into their classrooms and explained their projects. THS was offered many opportunities to participate in the Springdale Job Corps Center learning partnerships, and how students are looking for internships in the local area in all fields of studies.

THS hopes to have some of these students involved in the work of our offices, exhibits, research, programs, and marketing. We thank our hosts at the Springdale Job Corps Center for a great tour. It was sure interesting! ❖

Columbus Storm

By Doneva Shepard
THS Researcher

When Rod Hill, Fox TV's local Meteorologist, wanted to learn about the Columbus Day Storm, which occurred on October 12, 1962, the first place he thought of was Troutdale and the Troutdale Historical Society. Somehow "wind" and "Troutdale" just go together!

Having been a 'survivor' of the "Big Blow" as it was irreverently referred to, I came up with enough tales that Rod asked if he could do an interview on camera. I agreed, and Rod and I met at the Harlow house to look at pictures and discuss what it was like 'back then'. The book "The Big Blow", by Ellis Lucia, was the focus of the interview, which aired October 12, 2002. Reviewing the book brought back memories and Rod was fascinated that such extreme weather could have taken place without any warning.

The Columbus Day Storm was actually the tail end of a Pacific Typhoon, which covered an area of 75,000 square miles over a 125-mile-wide, one-thousand-mile-long corridor. It entered land somewhere around Eureka, CA and came up the coast, exiting just before hitting the Seattle World's Fair. No one who lived through it would ever forget it.

I was a young mother at home with my 3 little boys, ages 1, 5 and 9 when the storm hit. We were watching American Bandstand when it slammed into us. The TV went off immediately. We found out later the broadcasting tower had blown over. The windows in our living room were waving and I was afraid they would blow out so

(Continued on page 5)

Ambassador Convention 2004

By Marie Miller

The Troutdale Historical Society assisted the Troutdale Area and Gresham Chamber of Commerce recently, which resulted in winning the bid to host the 2004 Ambassador State Convention!

When contacted by the Gresham Chamber, THS Curator Mary Bryson and Executive Director Marie Miller toured Harlow House and Exhibition Hall with representatives from the Chamber, and inventoried many items that could be used for the winning display. Part of the bid process to lure conventions to your city is with interest in a theme and area attractions.

The 2002 Convention was held in Lincoln City, and the theme presented by the Troutdale & Gresham Chambers was Lewis & Clark and the Oregon Country. The THS contributed many wonderful exhibit items for the turn-

of-the century storefront. Many convention attendees gave high praise for the display. To see pictures of the event, please come and view them at the THS office!

Another part of the bid process for the 2004 Convention was a play, performed by Troutdale Area and Gresham Chamber members. The play was performed at an encore performance on October 22nd at Reynolds Middle School.

Hosting the Ambassadors, hospitality representatives from around the state, helps increase knowledge of and interest in the Troutdale area and the THS museums.

We congratulate our Troutdale and Gresham Chamber of Commerce on winning the host city bid for the 2004 State Convention, and look forward to sharing our area's attractions and history with them! ❖

Doneva on TV

(Continued from page 4)

I pulled the draperies and we tried to find a place where we felt safe. It seemed to blow for a very long time and when it was over, we had no electricity, no running water (we had a pump that ran on electricity) and no telephone. Other than that, we were intact.

The next morning it looked like a war zone! I realized we must start cooking the food in the freezer because it was going to go bad if we didn't. So, I put 2 big canning kettles on the wood stove and filled them with meat and let them cook until done. We had plenty of food and heat so we had neighbors in to partake of the pleasures of life with us. Having lived at the end of the Columbia River Gorge for so long, I was prepared. We had a wood stove for cooking and heat, coal oil lamps for light, a gravity-fed spring to bring water for the livestock and the house, and games and puzzles to help kill the time.

The roads were impassable because of downed trees and power poles, so I knew 'help' was not going to come very soon. It took several weeks for the trees to be cleared off the roads so the power company could repair the downed lines...and they were ALL downed. There were no poles left standing. Neighbors lost trees and roofs. The worst tragedy I knew of was when Wallace Aschoff's new barn in Boring fell in and he lost 20 prized Guernsey dairy cows. We were thankful there were no human fatalities in our area.

We'd like to add your remembrances to our historical archives. Contact THS at 503-661-2164 for more information on sharing your memories of the storm with us. ❖

Lewis & Clark (part 2 of 3)

Lewis and Clark confuse the Sandy and the Willamette Rivers

Glen Kirkpatrick, Lewis and Clark historian and secretary of the Lewis and Clark Trail Heritage Foundation, recently turned his eye to the expedition's exploration of the Sandy River. Excerpted below are some of his findings noted by the explorers and the confusion over the location of the Willamette River.

Kirkpatrick writes: "Standing at the confluence of the Quicksand (Sandy) and the Columbia Rivers, the explorers were convinced that the Quicksand (Sandy) was the major river draining the valley to the south. If you travel to the mouth of the Sandy and look in a southerly direction, it is easy to understand how the explorer made this assumption. The terrain is very flat and the impressive appearance of the Quicksand (Sandy) left no doubt in their minds.

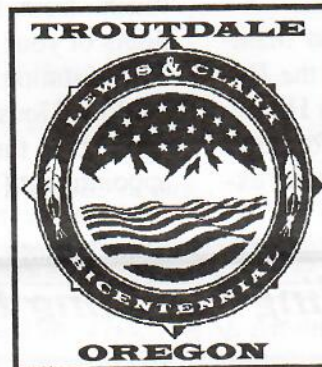
"Numerous publications indicate the mouth of the Multnomah (Willamette) was obscured by Image Canoe (Hayden) Island as they paddled by on the Washington side of the river. Historic nautical charts of the Columbia and Multnomah (Willamette) rivers, however, show that there were islands around the mouth of the Multnomah (Willamette), but that these islands did not obscure the river. My interpretation is that the Quicksand (Sandy) River impressed Lewis and Clark so much, that they missed the major river to the south simply because

they were not looking for it, believing the Quicksand (Sandy) was the major river. With the gentle currents and the wide Columbia, they simply paddled by the mouth going downriver, and on their upriver return in the Spring of 1806.

The Indians repeatedly told Lewis and Clark that the Quicksand (Sandy) was not the major river to the south and that there was another river farther to the west. Finally, on April 1, 1806, Sergeant Pryor and two compan-

ions were dispatched in a small canoe from Provisions Camp on Cottonwood Beach (opposite the east branch of the Quicksand River) to explore the Quicksand (Sandy) as far as they could go and return in one day.

When Pryor returned, he indicated the Indians were correct. He reported traveling 6 miles up the river and gave course and bearings indicating he traveled 7 miles up the river. He further indicated the river, before it divided in the delta, was 300 yards wide, but that upstream, the river was only 50 yards wide and appeared to head from Mt. Hood. Pryor described the waters of the river as turbid and the current rapid. Lewis surmised that there must be a large stream joining the Quicksand from the southwest. The next day, Clark and a detachment of men were dispatched down the Columbia to find the river the Indians called Multnomah. ❖



"Retired" Volunteer Coordinator Gives Thanks & Plea

By Adrienne Clauson

Volunteers? I call us the work horses of any organization. When the call goes out for "Help!" we answer it. The Tuesday Ladies Jean, Mary, Jean, Mona, & Barb; the Tea Girls; the Historian; Lewis & Clark Committee members; our Flower Decorator, Frieda; parking attendants Mike & Dave; House Sitters; Cleaner-Uppers; the Boy Scouts...all of the above and many, many more have given countless hours of service to the Troutdale Historical Society.

By their efforts we can maintain our three museums: the Depot Rail Museum, Harlow House, and the Exhibition Hall (formerly the "Barn"). Through these exhibits and museums we try to

keep the past for the future. Our visitors include the many school children, Scouts, Church groups, college students, and other Historical Societies who come to us on pre-arranged tours.

By being an open museum we attract visitors from all over the world and almost every state in the US. We need to keep these museums open at least Saturdays and Sundays and with your help we can make it happen.

Please! Volunteer! One day a month or one day a year... it's not much...from 1 to 4pm. Just three hours of your time.

Orientation will be held at the Harlow House at your convenience. Call the THS office for an appointment (503-661-2164).

My many thanks for those who

worked this past summer: Mario Ayala, Dale and Betty Baldwin, Florence Baker, Betty Kaufman, Sharon Nesbit, Donna McCollister, Jan Vandiver, Bill Payne and Jim Cook. ❖

Please! Volunteer!
One day a month or
one day a year
from 1pm to 4pm.
Just three hours of
your time to help us
give history a future.

Call the THS Office to
discover the opportunities
waiting for you!
503-661-2164

Historic Building has Long History of Fire

(Continued from page 3)

Blaser and Harlow store. It had no equal in the area until 1911 when bricklayers again came to the area to build the Multnomah County Poor Farm, now McMenamins Edgefield. In 1925, another major fire, possibly sparked by a passing train, more likely ignited by a tipped-over still, set the town ablaze. A driving east wind pushed the fire through the city. Some accounts say desperate firefighters dynamited a building to stop the blaze. It stopped just short of the Tiller Hotel, now Rainbow's End Cafe. The brick building survived, but was so severely damaged that top floor hotel rooms were demolished, leaving a one-story structure behind.

The most recent fire, in some ways, mirrored the 1925 event. In

1925, as the flames swept down the block, local residents helped merchants empty their stores of portable merchandise, carrying it to safety on the north side of the street. The same thing happened this time for jeweler Ali Peret when he trusted his inventory to the hands of strangers. The difference was that, in 1925, merchants invited local kids to help themselves to melting ice cream and warming soda pop while they watched the blaze. Peret moved across the street with his goods intact.

Though topless after 1925, the brick building continued to serve Troutdale for more than three-quarter's of a century. The basement area once had a frozen food storage locker. At various times it housed a drug store, the Troutdale liquor store, a quilt shop and

two different deli-restaurant operations. Later tenants revealed the old brick walls of the building. The brick basement with its arched supporting walls gave rise to all sorts of legends, including outlandish tales of underground links to the Sandy River and innocent saloon patrons shanghaied to the docks in Portland, though only rowboats navigated the Sandy.

A tunnel did exist, however. Part of the big-city innovations installed in 1907 was a sewer line to carry waste to the Sandy River. It was that line, dumping raw sewage into the Sandy, that brought Troutdale to the attention of state sanitary authorities in the early 1970s, forcing construction of a modern sanitary sewer system in the city. ❖

Dear Friends and Members:

Thank you for your unwavering support of the events and activities of the Troutdale Historical Society! Thanks to you, we are able to maintain 2 museums, an exhibit hall, and an active event calendar focused on sharing history with our community.

For 34 years, membership dues have assisted us in our mission to preserve the history of Troutdale, the Sandy River, and the Columbia Gorge. If you aren't yet a member, please fill out and return the membership form. Consider, too, giving the gift of history to a friend or family member, or making a donation to the operating fund or to a specific project.

Consider just a few of the benefits of membership...

- ◆ the preservation of history;
- ◆ discounts at our gift shop;
- ◆ reduced admission to affiliated museums;
- ◆ the Bygone Times.

Name(s) _____
 Address _____
 City _____ State _____ Zip _____
 Home Phone () _____
 Email _____
 Type of Membership Individual (\$20) Director's Club Individual (\$75)
 Couple/Family (\$30) Director's Club Couple (\$100)

Gift Membership
 Please send a THS gift membership to the following:

Name(s) _____
 Address _____
 City _____ State _____ Zip _____
 Home Phone () _____
 Email _____
 Type of Membership Individual (\$20) Director's Club Individual (\$75)
 Couple/Family (\$30) Director's Club Couple (\$100)

Donations
 In addition to my membership, I'd like to support the events and programs of the Troutdale Historical Society by making a donation to the following:

General Operating Fund Depot Rail Museum
 Harlow House Exhibition Hall (Lewis & Clark)
 Director's Fund To Be Used As Needed

My donation is in the amount of: \$ _____

Enclosed is my:

Check, made payable to Troutdale Historical Society
 Visa or Mastercard Card # _____
 Name as it appears on card _____
 Expiration Date _____

*You may also call or fax in your credit card information.
 Phone your information to 503-661-2164 or Fax it to 503-674-2995.*

Please return top half of this page, along with your payment, to: THS, 104 SE Kibling St, Troutdale OR 97060.

Springdale School Program Great Fun!

By Marie Miller

The Crown Point Country Historical Society (CPCHS) welcomed our members and guests to their museum and school base, the Springdale School, on Saturday, October 19th. Around 50 members enjoyed a wonderful slide show of the area schools that once dotted the local community, many of which are still standing or have been converted for other purposes.

Clarence Mershon, Chuck Rollins, and Steve Lehl provided great stories and photos of the schools, with an appreciative audience! Besides the slide show and wealth of information, our members were

treated to some dandy refreshments, and then a tour of the CPCHS's exhibits on schools, held over for display especially for the THS program. What a treat!

It was exciting to hear of the C.W. Post collection that fell into the CPCHS's hands...and all the treasurers therein! The research of our loyal THS member, Dorothy Klocks, is once again in print, this time with pictures that were not possible, or affordable, when she first printed her book on Corbett schools.

Sharon Nesbit was reminded at the program, just as she finishes the Troutdale school

chapter for our history records, that the Troutdale school district once extended to that first school at Springdale!

It was indeed a fascinating tour of our schools, and we were fortunate to be along on the ride for our program. We thank the members of the CPCHS for hosting us, and wish them great success on their projects! ❖

If we haven't called to ask you to help host the house or greet visitors, please call us at 503-661-2164.

We'll find you a job!



BULK RATE
U.S. POSTAGE
PAID
TROUTDALE, OR
PERMIT No. 5

Troutdale Historical Society

104 SE Kibling St, Troutdale, OR 97060
Phone: 503-661-2164
Fax: 503-674-2995

THS Board

David Ripma, President
Ed Thiemann, Vice President
Jean Holman, Secretary
Tom Graves, Treasurer
Ray Davenport
Scott Cunningham
Terry Smoke

THS Staff

Marie Miller, Executive Director
Mary Bryson, Curator
Doneva Shepard, Research/Genealogy
Penny Balch, Bookkeeping
Mario Ayala, Executive Assistant

Change Service Requested

Harlow House & Exhibition Hall

726 E. Historic Columbia River Hwy
Hours: Sat & Sun, 1 to 4 p.m.

Depot Rail Museum & THS Offices

473 E. Historic Columbia River Hwy
Hours: Office M-F 8-5 (Call for Tours)

Our Thanks for the Support of Our Friends & Members...

THS wishes to thank the following for their support...

Financial Contributions

Dr. Robert & Tami Campbell for their donation to the Operating Fund, the Harlow House, Depot Rail Museum, and Exhibition Hall. Larry Meisinger, Marvin & Janna Alberg, and the J. Frank Schmidt

Foundation for their generous contributions to the Operating Fund.

Memberships

Marvin & Janna Alberg, Howard Wendt family, Dr. Robert & Tami Campbell family, Margery B. Smith, Walter & Lois Mackey, Elice S. Swanson, June Powers Jones, Bonita Taylor, and Sheryl

& Max Maydew.

Artifacts

Merlyn Troska donated railroad memorabilia from his many years "working the tracks": a well-worn work cap, lunch pail toted to work over 40 years, passenger seat tickets, and wonderful photos of the "gang on the line". ❖

In Remembrance...

Nadine Jordan, a THS member in Albany writes:

My oldest son, Doug Randall, was killed in his private airplane on Tuesday, Sept. 17th. He was flying and about to land at Palomar Airport near Carlsbad, CA when another plane [hit] his airplane. Doug was 57 years old.

Frances and Aaron Fox were

Doug's great-grandparents. Many THS members may remember this fine family.

THS wishes to send our deepest sympathy to Nadine and her family on their loss. ❖

THS on TV!

A crew from NW Living filmed stories of our very own Harlow House and Depot. The segments aired on AT&T Broadband Channel 14 in the Troutdale area during three weeks: Oct 13-19, Oct 27-Nov 2, and Nov 3-9. NW Living enjoyed the THS stories and exhibits, and we certainly enjoyed sharing our history with them! ❖