

Bygone Times

A Newsletter of The Troutdale Historical Society.



DECEMBER, 1992

EDITOR SHARON NESBIT, 665-0423

A CHRISTMAS WEEKEND OF EVENTS...

Plan on two Christmas events on the weekend of Dec. 12 and 13.

First--our opening reception for Christmas at the Harlow House from noon to 4 p.m. Saturday, Dec. 12, at 726 E. Historic Columbia River Highway.

Bring a plate of cookies to share with others. Bring the kids and grandkids to see Santa Claus. Enjoy our hot wassail and a house decorated to the rafters with greenery and dolls.

You will especially like Marge Schmunk's favorite dolls, Snow White and the Seven Dwarfs. Craftswoman Letty Fowell has made doll ornaments to fit the theme. Buy one to add to your collection of Harlow House ornaments.

The Harlow House will be open the next day for our first Holiday Home Tour (read on) and from 1-4 p.m. each afternoon through the following week, Dec. 14-20, to allow time to see it.

ON TO OUR HOLIDAY TOUR...

Karen Burger-Kimber, who created this event as a fund-raiser for our society, calls this our holiday tour of Historic Buildings and Holiday Trappings.

It takes place on Sunday, Dec. 13, from noon to 6 p.m. and costs \$12 a person, (\$10 for historical society members.) Our friends at the Gresham Historical Society are helping to sell tickets.

Among the eight unique homes on display will be David Ripma's Sweetbrier farm, the former Wilson home, a Fairview Victorian, the Harlow House and the Paz home which will be set up for a Christmas wedding.

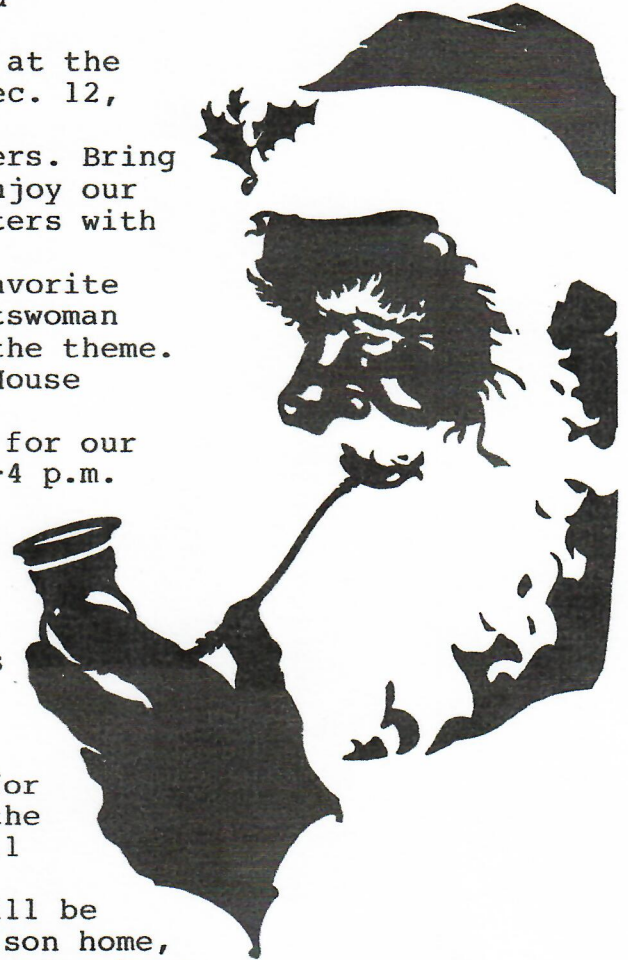
You may buy advance tickets at the Gresham Chamber of Commerce, the Gresham Pioneer Museum, the Troutdale Chamber of Commerce, or the Harlow House Museum on Friday, Saturday and Sunday afternoons. Or you may buy your ticket on the day of the event at the Harlow House, or any of the homes on the tour. To find those homes, just follow signs.

Also, help publicize the tour by posting the flyer on the last page of this newsletter in a prominent place.

AND MARK YOUR CALENDARS...

For Sunday, Jan. 10, at 1 p.m. when we have tentatively scheduled a dedication of our Oregon Trail markers at the Columbia Gorge Factory Stores. Following that we move to Troutdale City Hall at 2 p.m. for our regular meeting featuring food historian Peggy Lutz, who will talk about food preparation, food storage and diet on the Oregon Trail.

Her presentation includes a sample of trail dessert fare. There is a charge for this so we will accept donations to defray the cost.



WELCOME TO NEW MEMBERS...

DOROTHY DUGAN, Gresham joined our society as a result of attending Harvest Faire..New member LEN OTTO, Boring, grew up in Troutdale.

NAMEDROPPERS...

Thanks to JACK & ROBERTA BURNS and SHARON NESBIT for subbing at the Harlow House in Ellen Brother's absence...The following folks are all affiliate members with the Oregon Historical Society. Affiliate members help cement our relationship with the state society. Consider such a membership. And thanks to MR. & MRS. DALE BALDWIN, Corbett; BONNIE BRUNKOW, Portland; JACK & ROBERTA BURNS, Portland; SAM COX, Troutdale; FRANK & JEANNIE DRIVER, Corbett; BUS GIBSON, Portland; ALICE HARTJE, Vancouver; STEWART, LYNDA & BRYAN HARVEY, Portland; NANCY HAWVER, Troutdale; JOHN HILLYARD, Sandy; DICK JONES, Portland; DOROTHY KLOCK, Corbett; ARMAN KLUEHE, Portland; BILL & LOIS MOLLER, Gresham; SHARON NESBIT, Troutdale; HELEN OTTO; Troutdale; DAVID RIPMA, Troutdale; MARIE STONE, Fairview; and ALICE WAND, Troutdale...Thanks to JUDY KRUSSOW of Corbett, who found certificates naming Troutdale's John Hudson as postmaster, which she has donated...more thanks to these valiant barn workers who showed up Nov. 21 to insulate the barn--DICK JONES, SAM COX, BILL STONE, ROY HOOVER, BOB WINNING, BUS GIBSON, FRANK DRIVER, BOB STREBIN and JEAN HOLMAN.

TREASURER'S REPORT

Marge Schmunk notes that the change in the barn fund reflects transfer of \$5,900 in Harvest Faire profits from the operating fund to the barn fund.

As of October 31, 1992....

ENDOWMENT FUND.....	\$13,077.88
OPERATING FUND.....	10,490.96
DEDICATED BARN FUNDS.....	733.69
BARN BUILDING FUND.....	12,985.66
DIRECTOR'S FUND.....	2,652.34
TOTAL.....	\$39,940.53

IN MEMORY

Cecile Swanson, who lived in the Gresham-Troutdale area 50 years and who was active in Troutdale PTA, died recently. She was a member of our society and mother of another member, Elice Skirvin.

DONATIONS...

Gifts to the barn have come from KAY POWERS, SHARON NESBIT (in memory of Oral Lane), and GERALD & ROBERTA GRIMM (in memory of Arthur Grimm.) CATHY HAMME has made a gift to the director's fund.

STUMPED FOR A CHRISTMAS IDEA....

How about giving a 1993 gift membership to the Troutdale Historical Society. Individual memberships are \$5. Couple memberships are \$8. Family memberships are \$15. Lifetime memberships are \$100. Fill out the form below and the rest is history.

MY NAME AND ADDRESS

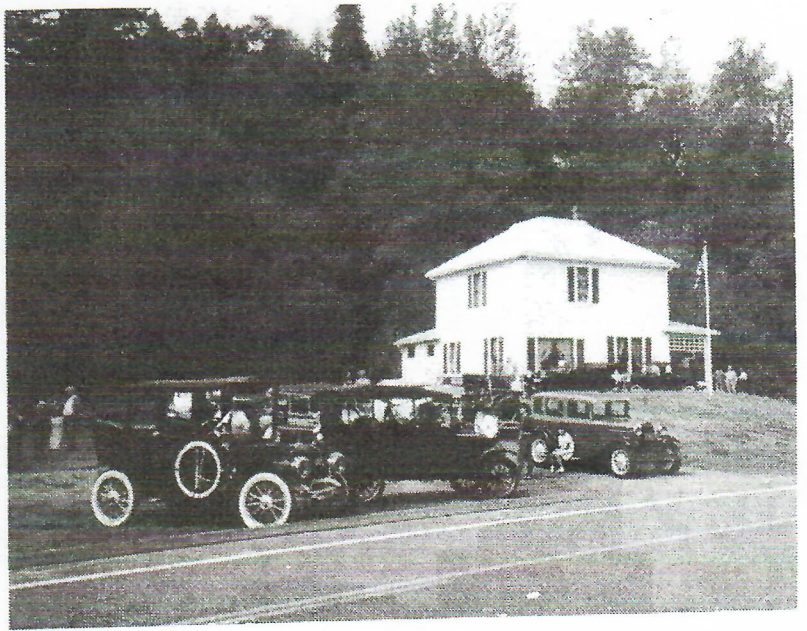
IS:.....

.....

I WANT TO BUY A FAMILY....., COUPLE....., INDIVIDUAL..., MEMBERSHIP FOR NAME.....

ADDRESS.....

CITY, ZIP.....



1992 SCRAP BOOK

At left: Ellen Brothers, new director of the Troutdale Historical Society. Above: July visit of Horseless Carriage Club to Harlow House. Below: Sam Cox and friend at the Shaniko Hotel, September:





ART FOR OUR NEW TRAIL MARKERS

Illustrations like the one of the Aaron Fox Store at Troutdale (above) will be used on the new interpretive markers telling about Troutdale's place on the Oregon Trail. The Troutdale markers, two of which will be at the Columbia Gorge Factory Stores, and one, which will be at the Harlow House, are part of a series of 43 exhibits along the trail from Nyssa to Oregon City. The artist is Roger Cooke.

SAY THANKS TO MCMENAMIN'S

McMenamin's Pubs & Breweries made a gift of slightly more than \$1,500 to our society as a result of Troutdale Historical Society Day at the Power Station at Edgefield Village.

Their gift will be distributed to the barn, operating and director's funds. Say thanks the next time you dine at the Power Station.

OUR 25TH BIRTHDAY...

As part of our 25th birthday celebration in February, we will be honoring charter members of the society. If your name is listed below, plan on joining us on Feb. 14, Valentine's Day.

Our surviving charter members are: Edna Alexander, Georgia Mae Carow, Beryl P. Cook, Nancy Cox, Sam Cox, Sue Davis, Louise Dix, Robert Dix, Mary Hughes, Barbara Lampert, Don Lampert, Joe Lucas, Roy Meger, Sharon Nesbit, Marilyn Oakes, Glenn Otto, Helen Otto, Dale Parsons, Margaret Parsons, Ethel Peterson, Martine Rathman, Vernon Rathman, Art Scofield, Emily Scofield, Frank Simons, Irene Simons, Al Stoeckel, Margaret Stoeckel, Kay Struckman, Dorothy Sturges, Robert Sturges, Laura Vorpahl and Truly Wright.

THANK YOU TO...

David Ripma, who donated refreshments for a recent meeting at the Harlow House museum and barn.

FROM THE DIRECTOR'S DESK...

The snow is beginning to stick to the branches of the old walnut tree outside the office window at the Harlow House. It's cozy here at Christmas, the house all decorated by volunteers. Spicy scents of wassail bubbling on the stove and fresh-baked cookies are threatening to lure me downstairs. I resist for I have some things to do, but hope for visitors so I can share the moment and sneak a sweet. Those of you who missed the museum at Christmas, please stop by this month on either Saturday, 1 to 5 p.m., or Sunday, 1 to 4 p.m.

It's the time of year for extending good wishes, reflecting and thanking others. I would like to thank all of you who have helped me begin to learn the ropes as director. Thank you to all the volunteers who have hosted at the Harlow House, the ice cream social, the Harvest Faire, the Christmas home tour, on barn work days and on every other project. Most especially, thank you to Sharon Nesbit and Cathy Hamme for all their support and for never saying, "Haven't you learned that yet?" when I asked the same question three times over.

Happy Holidays and Greetings for the New Year,

Ellen Brothers

NEWS FROM EDGEFIELD...

Several historical society members with ties to Edgefield Manor met at McMenamin's Power Station in December to share memories with the artists who will paint the murals on the first floor of the main lodge. Work began in December on renovations to the main building and should be completed by June. Thanks to Jo Callister for organizing the afternoon of reminiscence.

TROUTDALE HISTORICAL SOCIETY
104 S.E. KIBLING ST.
TROUTDALE, ORE. 97060

BULK RATE
U.S. POSTAGE
PAID
TROUTDALE, OR
PERMIT NO. 5

Holiday Tour
Historic Buildings
&
Holiday Trappings

Sunday, December 13, 1992

12:00 - 6:00 pm

\$12.00 per Person

Eight Unique Theme Homes & Displays
Refreshments and Gift Items

ADVANCE TICKETS AVAILABLE

IN TROUTDALE:

Troutdale Chamber of Commerce • Troutdale Depot, 473 E. Historic Col. Rvr. Hwy.

Harlow House Museum • 726 E. Historic Col. Rvr. Hwy.

IN GRESHAM:

Gresham Chamber of Commerce • 150 W. Powell Blvd.

Gresham Pioneer Museum • 410 N. Main

TICKETS ON SALE AT ALL LOCATIONS ON TOUR DATE

This Event Sponsored by the Troutdale Historical Society